

Installation instructions

NG Click Vinyl, Herringbone

Important

Check the quality of the goods supplied before proceeding with the preparation work. Nordanger Gulv AS replaces any product with defects, but claims cannot be made on goods that have been cut to size or laid. The installation must be done using the same production batch in order to guarantee the uniformity of colour and design.

Acclimatization

The laying area must have a steady temperature of 18 - 25°C for 48 hours prior to, during and for 24 hours after installation.

The floor should be stored in the room to be installed for a minimum of 24 hours prior to installation. Where the floorcoverings have been stored or transported immediately prior to delivery in temperatures below 10°C the acclimatization period should be extended to 48 hours.

During this time, the planks should remain in the carton, on a flat surface and the room temperature should be maintained consistent between 18 to 25°C. Relative humidity should be between 30 - 60 %.

We recommend not stacking more than 5 boxes in height during the acclimatization period.

Install as floating floor

NG Click vinyl must be installed as a floating floor and must be able to move freely in response to changes in temperature. The floor must not be glued, nailed or attached to the substrate, walls or attached to any part of the building structure. The floor must not be locked by installations such as furniture, heavy cupboards, kitchen furniture, kitchen island, walls, counters, ovens. These must be installed before the floor is laid. The floor is then fitted around these, with room for expansion and contraction. Fill expansion joints around potentially wet areas with 100% silicone waterproof sealant. Always remove water and other liquids immediately.

Large Areas

Expanses greater than 30,48 m in any direction will require a T-molding/expansion transition to divide the assembly into smaller sections.

Adjoining areas

T-molding/expansion transition is required to separate installations in adjoining spaces interconnected by a narrow opening, such as a doorway between rooms.

Subfloor

NG Click Vinyl can be installed on the following substrates:

- new or existing concrete, cement screed or terrazzo substrate
- new or existing glued or screwed wood panel
- chipboard and plasterboard intended for floor coverings
- ceramics tiles, maximum joint < 3 mm width/2 mm depth
- floor paint
- compact resilient floor coverings (semi-flexible tiles, vinyl tiles, sheet vinyl flooring and linoleum).

Make sure that the subfloor is smooth, flat, dry, clean and solid and meets the requirements for flatness in accordance with Norwegian Standard NS 3420. Maximum +/- 3 mm on 2 m measure length, 2 mm on 1 m measure length and 1,2 mm on 25 cm measure length.

Unevenness must be sanded down or leveled with a floor leveler. Voids or humps in the subfloor will prevent the planks from locking properly.

Old foam underlay from carpets and adhesive residue should be removed prior to installation.

Ceramic tiles should be leveled by applying a cementitious leveling compound to even out joints (if the joints are larger than 3 mm width/2 mm depth).

On concrete floors, relative humidity, RH, should not exceed 85% in floors without underfloor heating and 75% RH in floors with underfloor heating. Note that this applies to building moisture and not moisture supplements for other reasons such as moisture from the ground etc.

Substrates of board material are assumed to maintain a moisture ratio of a maximum of 9.5% (40% RH at + 20 ° C) so that movements, which can later cause damage, do not occur.

For any subfloor not listed above or if any doubt exists, contact Nordanger Gulv AS.

Underfloor heating:

NG Click Vinyl can be laid on subfloors with underfloor heating, provided that the maximum surface temperature of the floor under no conditions of use exceeds 27 ° C.

When laying, the floor heating system must be switched off or switched on lowest temperature, at least 48 hours before laying. The substrate temperature must not fall below 18° C when laying.

Underfloor heating system temperature can be raised 72 hours after laying. When the floor temperature is raised, it should be done step by step so that the substrate and the floor together can adapt to the temperature change.

Installation (see illustration below):

Tools needed: a tape measure, pencil, planks, cutter knife, T-square, hard PVC mallet, a straight edge and disassembling wedge.

Install the first two planks:

Find two planks, A and B, and the square. Place plank B with the short side to the long side of plank A. Use the square to align the two planks correctly. Then tap gently with the PVC mallet to lock the planks together. The grooved side of the planks should always face inwards.

Install the third plank:

Angle the short side (A) to the long side of the second plank (B). Use the square to align the two battens correctly. Continue to complete the first row.

Continue to install the first 3 rows:

Continue the installation by alternately laying plank A and plank B.

Preparation to align against the wall:

Use the ruler and place it at the bottom of the triangles against the wall. Make a line with the pencil.

Place the angle perpendicular to the pencil line, close to the edges of the planks. Make the second line.

Use spacers so that the distance to the walls is at least 10 mm.

Cutting the planks

Use a utility knife/circular saw and a ruler and cut the planks along the lines. Continue working with the planks facing you and straight into the wall. The cut pieces can be used later when you need to adjust them to the walls.



Complete the installation

Continue each subsequent row by placing plank A first. Measure the distance from the wall at the beginning and end of the row and then cut the planks using a utility knife/circular saw. Continue the installation by alternating plank B followed by plank A.

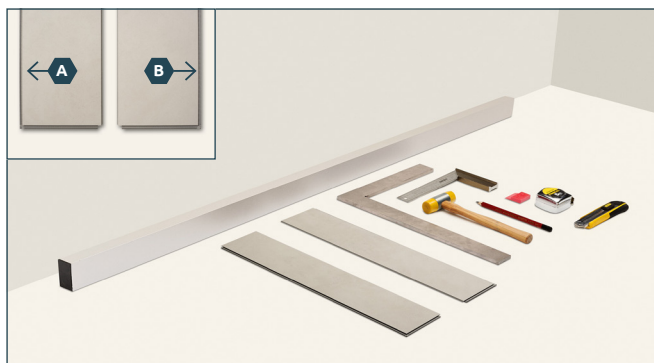
For further information:

www.nordanger.no

E-mail: gulv@nordanger.no

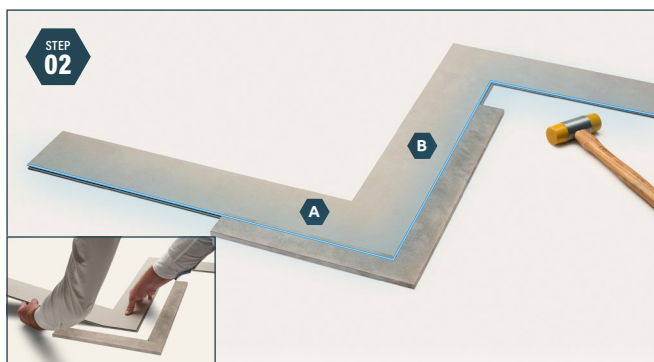
Tel: +47 22 73 10 00

Engaging Click4UPro Herringbone



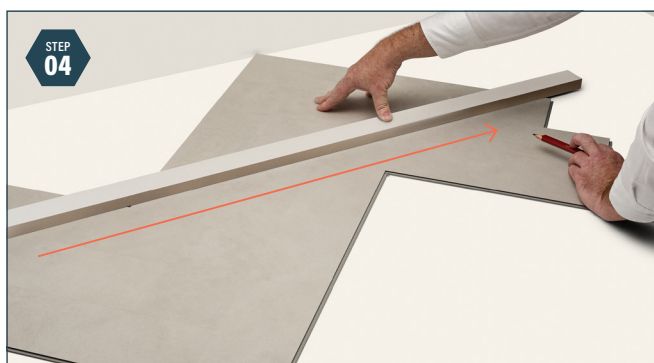
Tools

Tools needed: a tape measure, pencil, planks, cutter knife, T-square, hard PVC mallet, a straight edge and disassembling wedge



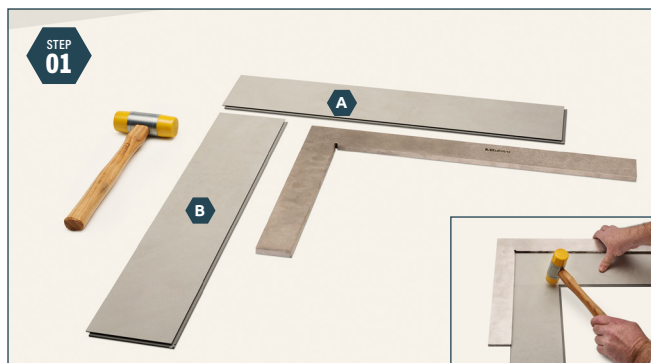
Install the 3rd plank:

Angle the short side (A) against the long side of the second plank (B). Use the T-square to align the two planks perfectly. **Make sure that the groove side of the plank is always facing inwards.** Continue finishing the first row.



Preparation to align with the wall

Use the straight edge and place it at the bottom of the triangles facing the wall. Draw a line with your pencil.



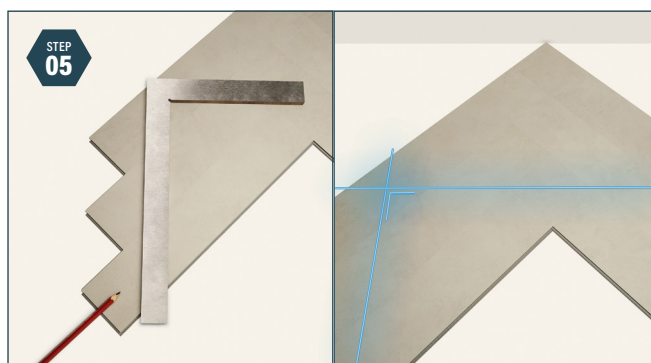
Install first 2 planks:

Take 2 planks, A & B, and the T-Square. Drop plank B with the short side in the long side of plank A. Use the T-square to align the two planks perfectly. Then, tap gently with the PVC mallet to lock the planks together.



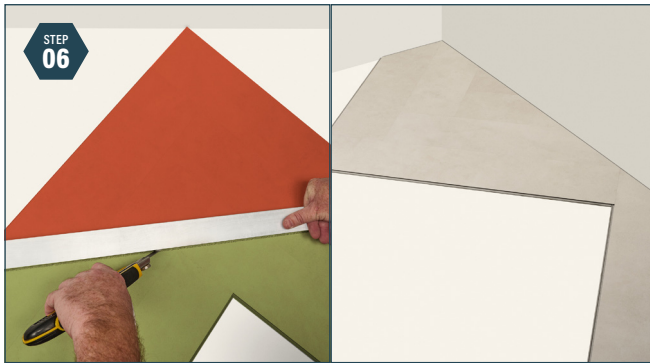
Continue installing the first 3 rows:

Continue installation by alternating every row with plank A or plank B.



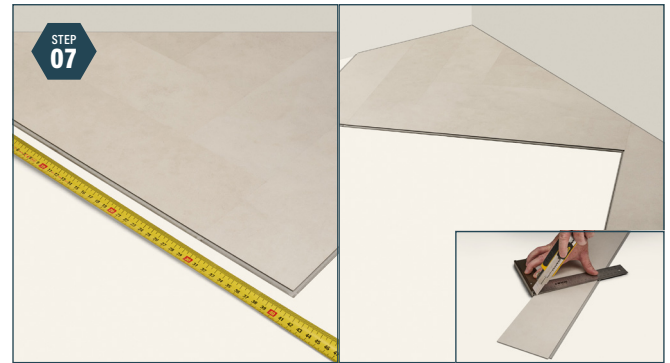
Preparation to align with the wall

Place your T-square perpendicular to the drawn line, near the edges of the planks. Draw your second line.



Cutting the planks

Use a cutter knife/circular saw and straight edge and cut the planks following the lines. Continue working with the planks facing you and align against the wall. The remaining cutted pieces can be used when finishing the room.



Alternate planks

Continue each next row by placing plank A in a row first. Measure the distance from the wall at the start and end of the row with a tape measure and cut the planks accordingly by using a cutter knife. Continue installation by alternating plank B followed by plank A.



Disassembling wedge

Place the lower part of the disassembling wedge underneath the plank needing to be disengaged and gently tap with the hammer on the adjacent plank.



Loosening planks:

Slowly lift the plank upwards and lift it loose.